

BEACH CLUB

FRIDAY HARBOUR

KIDS' MENU

AGES 12 AND UNDER

SALADS



CAESAR SALAD – 8

(D) (VG)

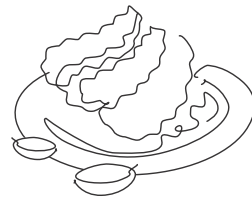
romaine lettuce, grand padano,
creamy lemon dressing

GARDEN SALAD – 7

(V) (GF)

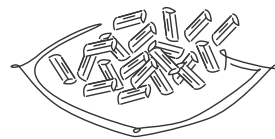
mixed greens, carrot, radish,
cherry tomato, red wine vinaigrette

BIG KID ENTRÉES



CHICKEN FINGERS – 13

four chicken tenders, fresh cut fries,
plum sauce, ketchup

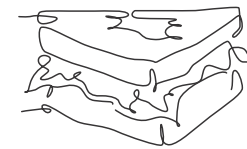


PENNE PASTA – 9

(VG)

choice of san marzano
tomato sauce or butter

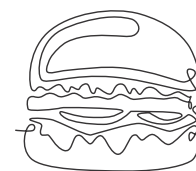
KID PLATES



GRILLED CHEESE – 12

(D) (VG)

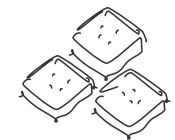
classic grilled cheese with choice
of fresh cut fries or side salad



KIDS' HAMBURGER – 12

lettuce, tomato,
choice of fresh cut fries or side salad

DESSERTS



CHOCOLATE BROWNIE – 7

(D) (VG)

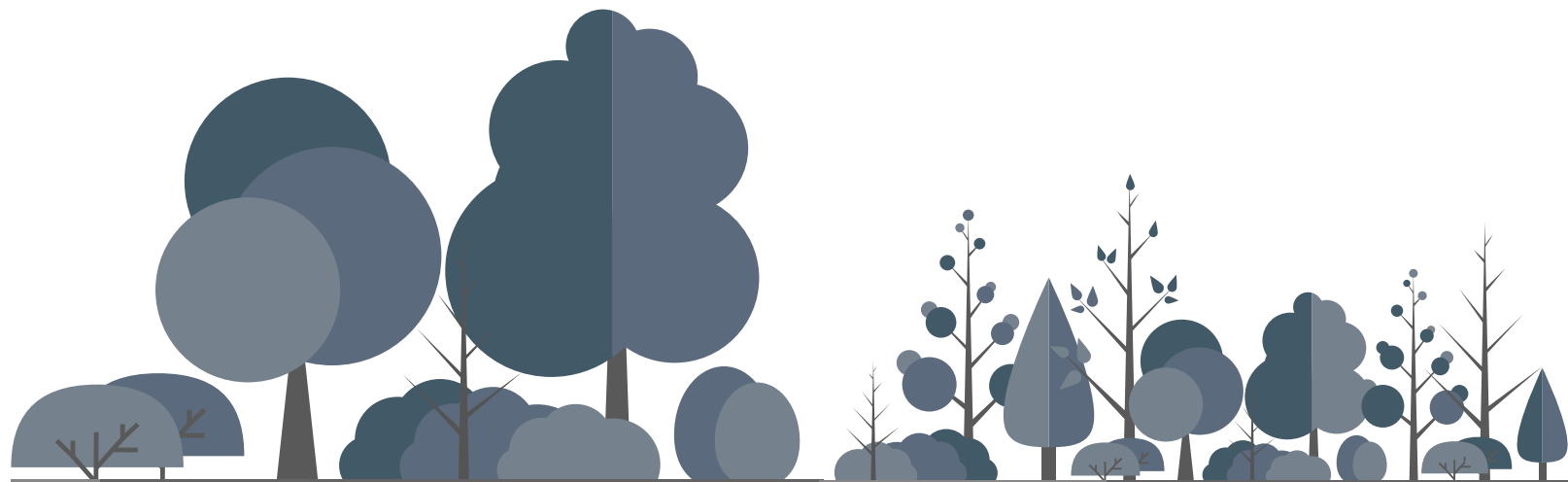
warm chocolate brownie,
vanilla ice cream



ICE CREAM SUNDAE – 7

(D) (VG) (GF)

vanilla ice cream, choice of chocolate, caramel
or raspberry sauce, sprinkles, whipped cream



(D) contains dairy (SH) contains shellfish (VG) vegetarian (GF) gluten-free
(N) contains nuts (P) contains pork (V) vegan

Menu items may contain or have come into contact with food allergens such as nuts, peanuts, dairy, and wheat.
For any food allergies or dietary restrictions, please speak with your server.



BEACH CLUB

FRIDAY HARBOUR

BRAIN FOOD

WORD SEARCH

The words are hiding within this giant jumble of letters. How many can you find?

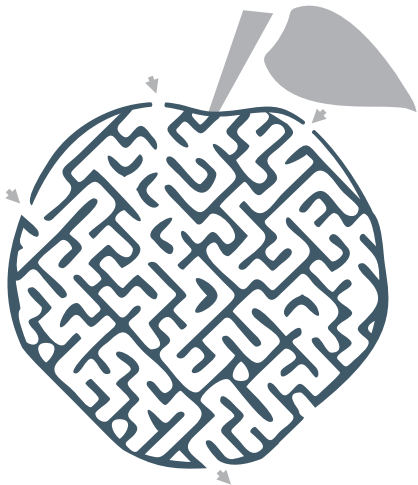
S	H	I	P	T	O	J	P	F	D
I	A	S	U	N	E	L	A	I	S
F	N	I	D	S	Y	W	I	S	A
E	C	S	C	L	O	U	D	H	I
T	H	Y	K	G	Y	L	E	T	L
A	O	H	T	A	C	K	L	E	R
B	R	E	Q	I	L	E	H	T	I
S	E	L	M	W	H	A	L	E	D
P	A	M	L	J	A	M	E	R	S
Y	S	T	E	A	M	B	O	A	T

ANSWERS

SHIP, SUN, ANCHOR, CLOUD, FISH, SAIL, TACKLE, WHALE, STEAMBOAT

MAZE CRAZE

There are three ways into the maze, but only one way out. Can you find the proper path and escape the apple?



ARE YOU A MATHLETE?

Test your number skills with these mini math quizzes. Simply fill in the blanks to find the correct answers.

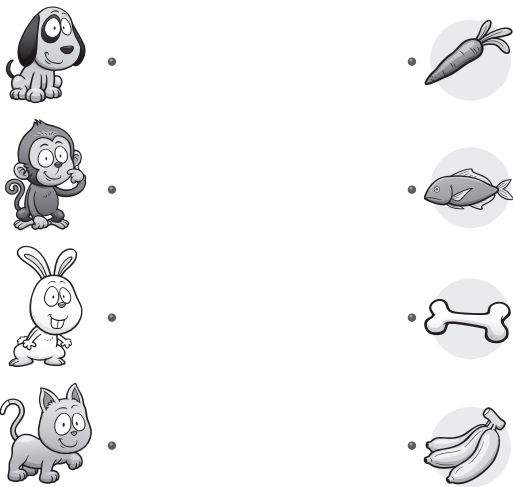
6	+		=	8
-		+		-
	-	3	=	
=		=		=
2	+		=	7

FIND MY SHADOW

Each of these little animals has lost its shadow. Can you help match them up again?



WHAT DO THEY EAT?



CONNECT THE DOTS

Just follow the path of numbers, one by one, and connect all the dots to see the big picture.

